

Ninigret Pond

No-Wake Zones and Reckless Vessel Operation Enforcement

No-Wake and Reckless Vessel Operation will be enforced in the confines of;

- Breach-way and breach-way channel
- Marinas
- Mooring Fields
- Marked No-Wake Zones

Within 200 feet of docks, or while passing through areas where vessels are at anchor

Passing in close proximity to other vessels underway in a manor so as to endanger the life, safety, or property of another person.



Ninigret Pond

No-Wake Zones and Reckless Vessel Operation Enforcement

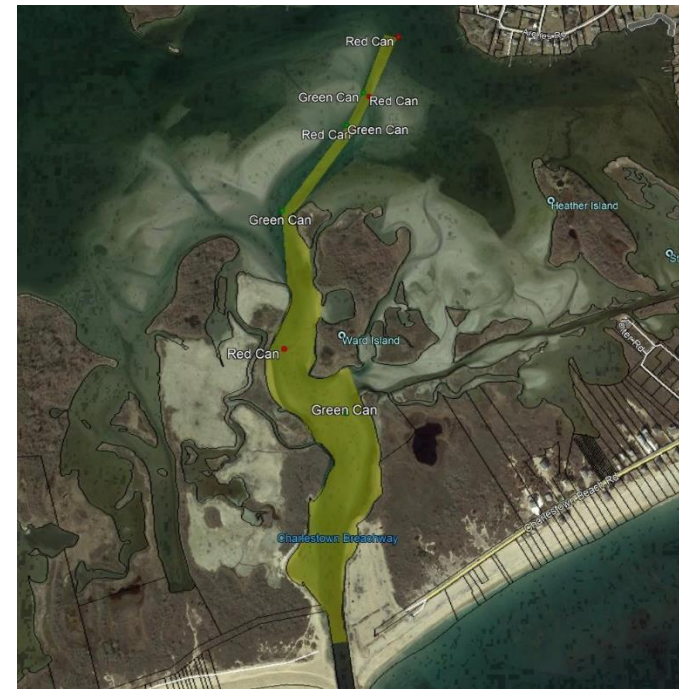
No-Wake Zone



Pond Street Channel and Shelter Cove Marina

No-Wake sign south to and including the passing under the Charlestown Beach Road bridge in Green Hill Pond.

No-Wake Zone



Charlestown Breach-way Channel

No-Wake from the Ninigret Pond channel entrance, up to the breach-way. Vessels within 200 yards of entering or exiting the breach-way may exceed 5 mph or leave a wake in order to maintain vessel control and safe navigation in poor surf conditions

Ninigret Pond

No-Wake Zones and Reckless Vessel Operation Enforcement

No-Wake Zone



Kenyon Cove, and Ocean House Marina
Inland of the No-Wake Buoy.

No-Wake Zone



Pond Shore
Inland of the three No-Wake Buoys